

Dear Parents and carers,

We've had a great first week back at school, following the Christmas Break and New Year. I'll be spending the next couple of weeks regularly visiting all classes to join in with what they are currently learning in their phonics and I can't wait!

Online Safety – How to set up parental controls for Apps on devices

Below are two safety guides for parent/carers use in setting up controls for Apps on iPhone and Android devices.

Most smartphones allow parents and carers to choose which apps and features appear on their child's device and which ones don't – also preventing young people from buying and downloading anything that's unsuitable for their age. These guides to parental controls for managing apps on iPhones and Android devices will help you to reduce the chance of your child using a game or app that might not be appropriate for their age.

In the guides, you'll also find a number of tips such as how to restrict built-in apps, the game centre and app store purchases.

[iPhone parental control guide](#)

[Android parental control guide](#)

Upcoming information events

We have two events happening within the next few weeks that we would like to share with you.

On Tuesday 23rd January at 2:30pm, Mrs Ketrina Hill will be leading a Maths café for year 1 parent/carers. This will focus on fluency, problem solving and reasoning. We will be looking at the way children learn using concrete and pictorial resources, introducing them to the Maths vocabulary that we use and will provide parent/carers with the opportunity to take on a Maths challenge with their child.

Closely following this, Mrs Ketrina Hill will then be holding a Year 2 Maths café for parent/carers on Tuesday 30th January at 2:30pm.

ESA Rock and Roll Bingo Night (adults only)

Following on from the success of the ESA Quiz Night, they next bring to you a Rock and Roll bingo event on Friday 2nd February in the school hall.

For those who don't know what it is, here's how it works: Instead of your traditional numbers being called out in a normal game of bingo, they're replaced with 15-20 seconds bursts of sing along songs from the past and present!



The numbers on the bingo cards are replaced with artists and song name. So, with your bingo card in hand and your dabber on standby, listen out for the songs being played and mark them off as you would a normal game of bingo.

We will be selling tickets at £3 per person which will get you entry to the event, one round of Rock and Roll bingo and snacks for your table. (Further bingo cards can be purchased on the night for £2 a round). Prizes will be awarded in each round to the winning line and a full house.

There will also be beer, wine, prosecco, mixer cans and soft drinks throughout the night at the ESA bar. Cash or card payments will be accepted on the night for the purchase of drinks.

Doors will open at 6:30pm for a 7pm start.

Advance booking for this event is essential and can be done through [school gateway and selecting payment option "Rock and Roll Bingo Night"](#). You can pay for multiple tickets via this payment option. There is a maximum capacity for the hall for events like this so we will let parent/carers know if we are approaching this number if necessary. If you have any questions about tickets, please contact Mrs Unwin in the school office.

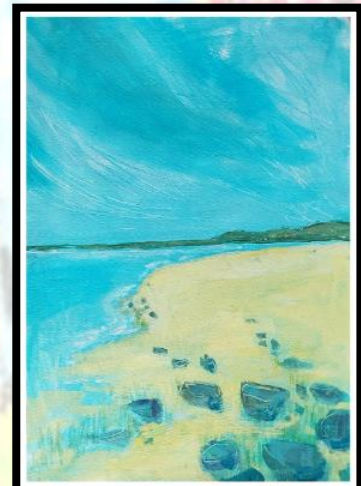
Ticket sales will close at 9am on Friday 26th January to allow plenty of time for ordering bingo sheets and to ensure that enough stock is in place for the ESA bar!

ESA Paint and Sip Evening (adults only)

Come and create a masterpiece painting, guided by a professional artist, Christine Haseldine, whilst enjoying drinks from our bar!

For only £27 you will be provided with all the materials and instructions, 2 complimentary glasses of prosecco and you can take home your very own painting.

Tickets to this event can be purchases through [school gateway and by selecting payment option "ESA paint and sip evening"](#)

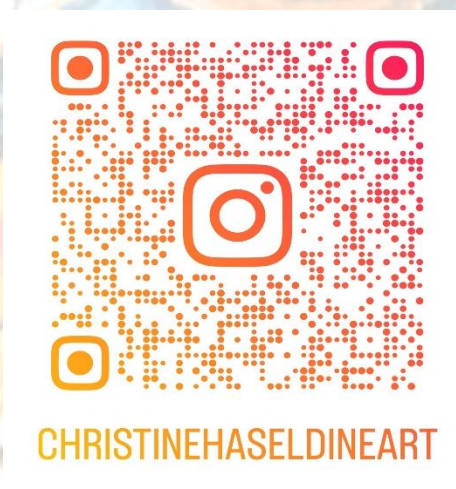


Please add the names of the people attending if you are booking for more than one person (you can book for multiple people via this payment option)

Our Paint and Sip night is on Friday 22nd March and as there are only 30 spaces, we advise early booking for this fabulous event! (adults only)

Deadline to book is 15th March to allow plenty of time for organising materials and to ensure that enough stock is in place for the ESA bar!

Further information about the event can be found on [this poster](#) and you can take a look at Christsine's art work and previous Sip & Paint events by scanning the QR code below.



ESA fundraising

The Eastfield School Association have worked hard over the last couple of years to develop events to cater for a wide range of interests and attempt to raise as much additional funding for the school as possible.

In May 2022, as a school we decided that we wanted to pull together a 5-year fundraising target of £25,000. This was to mostly fund a complete overall of our reading texts for fully decodable ones and boost our ICT hardware so that Computing can be included more widely across the school and all areas of learning.

To date, the ESA events that have taken place and the school community support has meant that we have raised a grand total of £15,016 so far, which is 60% of our total target! This is absolutely incredible, and we can't thank you all enough. So far we have purchased 6 new iPads and we will soon be purchasing another 6 which will bring our total of iPads across school to 30. Mrs Worth is also planning to gather a Reading wish list to increase or Little Wandle reading texts further as well as important reading resources to support learning and acquisition.

Across the Autumn term alone, your generosity and the voluntary support of the ESA members to plan, organise and run events has meant that school raised a whopping £3819.67 in just 16 weeks!

Please click on the following posters for further information on how much has been raised.

[January 2024 Thermometer](#)

[Autumn 2023 fundraising review](#)

To continue with this roaring success, we are always looking for more volunteers to "share the load". Please see the following poster for how you could support.

[ESA lite poster](#)

Education Inclusion Family Adviser Information

Katie Smith is the Education Inclusion Family Worker for the St Ives area.

Parent/Carers can book slots on family workshops directly with Katie through the following contact details:

[✉ katie.smith@cambridgeshire.gov.uk](mailto:katie.smith@cambridgeshire.gov.uk)

[☎ 07388 371257](tel:07388371257)

Please [click here](#) for the latest Education Inclusion Family Adviser Newsletter.

Illegal Parking

Just before the Christmas Break, we received a few calls and visits from local residents feeling upset and aggrieved by how some members of the school community are parking on the road outside of the school and along the adjoining roads.

Please can I remind everyone to take the time to park safely and in a way that is respectful of those who live near the school. Not only will this help the school maintain good relationships with the neighbours but most importantly it will mean that pedestrians can be kept safe.

I have made contact with the community police team who will be continuing to make unannounced, ad-hoc parking restriction enforcements so please do bear this in mind when you parking near school to drop off or collect your children.

I would also like to take this opportunity to remind everyone that parking in the school car park is prohibited unless you have obtained permission from the school in advance and display a parking badge provided by us. This also includes not parking directly outside of the blue car entrance gate. The Highway Code

recommends parking at least 10 metres away from a junction, except where there are legitimate parking bays available and this particular area is not a legitimate parking bay.

Thank you in advance for your support and understanding on this matter.

NSPCC Number Day

We are delighted to be supporting the NSPCC by taking part in Number Day on Friday 2 February 2024.

Everything the NSPCC does protects children today and prevents abuse tomorrow.



The NSPCC needs our support more than ever. By raising money, we can help to fund their vital services such as Childline – the helpline that's always there for children and young people whatever their problem or concern.



Number Day is a great way to make maths fun and bring about a positive, 'can-do' attitude towards it.

We are having a fun day of maths activities, and we will be taking part in Dress up for Digits. Pupils are asked to wear an item of clothing with a number on it (football shirt, cap, netball shirt or even a onesie!).

Or get even more creative by dressing in a maths or numbers theme. To help raise money for the NSPCC, we are asking for a suggested donation of £2, and we'd love everyone in the school to take part in this special event.

We've set up a [Just Giving page](#), please donate and share with friends so we can support the NSPCC.

We're really looking forward to all the fun of Number Day, and we really appreciate your support. All the money we raise at Eastfield will make an enormous difference to children today and help NSPCC prevent abuse.



Pupil Premium Funding

Pupil Premium represents additional funding that the government gives to schools for each pupil considered to be disadvantaged.

Poverty or low income is the single most important factor in predicting a child's future life chances, with many pupils in low income families having low attainment by age 16. The Government believes that the Pupil Premium is the best way to address these underlying inequalities between children eligible for free school meals

(FSM) and their peers by ensuring that funding to tackle disadvantage reaches the pupils who need it most.

If you are receiving any of the eligible benefits listed below, you can apply for free school meals and allow your school to receive the Pupil Premium funding.

Additionally, as part of the school registration process and our yearly data checks, you will also have the option to sign up for pupil premium.

- Income Support
- Income Based Job Seekers Allowance
- Income-related Employment and Support Allowance
- Child Tax Credit - but no element of Working Tax Credit - and have an annual income (as assessed by HM Revenue and Customs (HMRC)) that does not exceed £16,190
- If you are supported under Part VI of the Immigration and Asylum Act 1999
- Guarantee element of State Pension Credit
- Working Tax Credit during the four-week period immediately after your employment finishes or after you start to work less hours per week
- Universal Credit with an annual net earned income of no more than £7,400 (as from 1 April 2018)

If you feel you could/should be in a position for your child to be receiving this additional support, then please click the following button to apply

[Apply for Pupil Premium/free school meals](#)

AKtivities Ltd

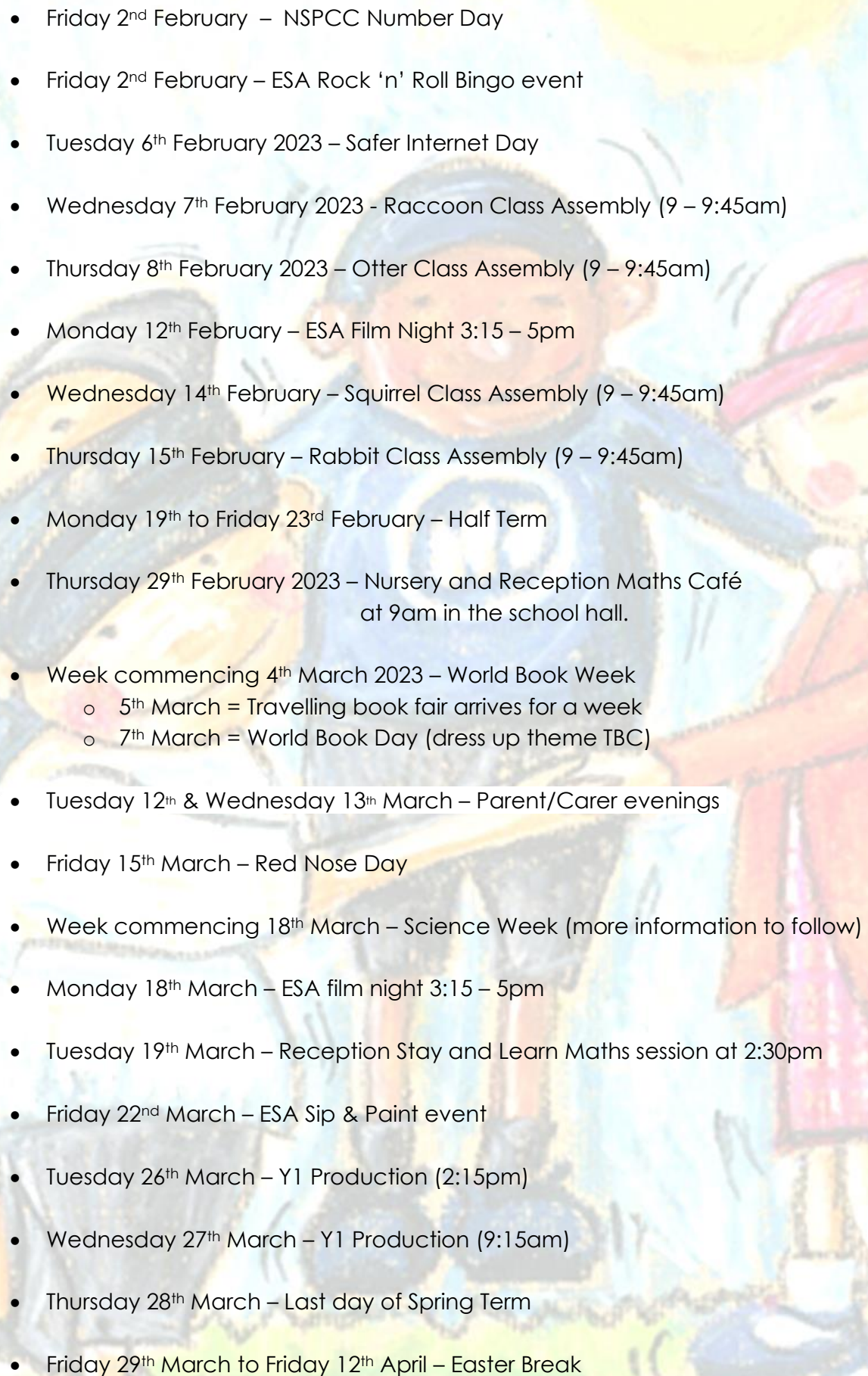
AKtivities are running a sports camp for children aged 4-16 at Hemingford Grey Primary School during the February half term holiday.

[Click here](#) to see their flyer and further information about the camp.

Children from Eastfield have previously attended, and they would like to reach more families to help them through this difficult cost of living crisis by providing outstanding yet affordable holiday provision.

Important dates for your diaries

- Tuesday 23rd January – Year 1 Maths Café at 2:30pm in the school hall
- Tuesday 30th January – Year 2 Maths Café at 2:30pm in the school hall

- 
- Friday 2nd February – NSPCC Number Day
 - Friday 2nd February – ESA Rock ‘n’ Roll Bingo event
 - Tuesday 6th February 2023 – Safer Internet Day
 - Wednesday 7th February 2023 - Raccoon Class Assembly (9 – 9:45am)
 - Thursday 8th February 2023 – Otter Class Assembly (9 – 9:45am)
 - Monday 12th February – ESA Film Night 3:15 – 5pm
 - Wednesday 14th February – Squirrel Class Assembly (9 – 9:45am)
 - Thursday 15th February – Rabbit Class Assembly (9 – 9:45am)
 - Monday 19th to Friday 23rd February – Half Term
 - Thursday 29th February 2023 – Nursery and Reception Maths Café at 9am in the school hall.
 - Week commencing 4th March 2023 – World Book Week
 - 5th March = Travelling book fair arrives for a week
 - 7th March = World Book Day (dress up theme TBC)
 - Tuesday 12th & Wednesday 13th March – Parent/Carer evenings
 - Friday 15th March – Red Nose Day
 - Week commencing 18th March – Science Week (more information to follow)
 - Monday 18th March – ESA film night 3:15 – 5pm
 - Tuesday 19th March – Reception Stay and Learn Maths session at 2:30pm
 - Friday 22nd March – ESA Sip & Paint event
 - Tuesday 26th March – Y1 Production (2:15pm)
 - Wednesday 27th March – Y1 Production (9:15am)
 - Thursday 28th March – Last day of Spring Term
 - Friday 29th March to Friday 12th April – Easter Break

- Monday 15th April – Start of Summer Term

Yours sincerely

Summerfield

Mrs Summerfield

